

Just the facts: traumatic cardiac arrest

Traumatic cardiac arrest resus: what can guide initial decision-making?

Population-based cohort studies

INFORM BEST PREDICTORS OF SURVIVAL TO HOSPITAL DISCHARGE



Shockable Rhythm



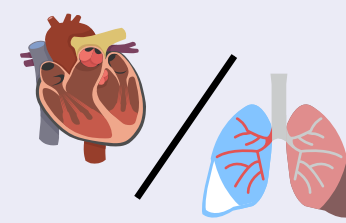
Organized cardiac activity

Why do trauma patients arrest?

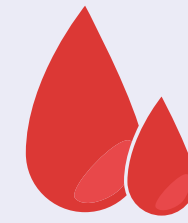


MECHANISM

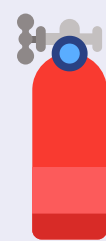
Address reversible causes



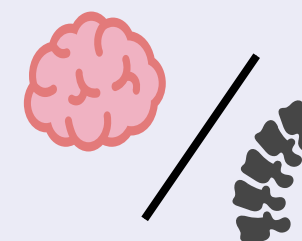
Obstructive



Hypovolemic



Hypoxemic



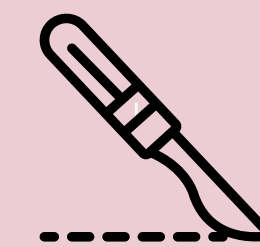
Neurologic



PoCUS can help:

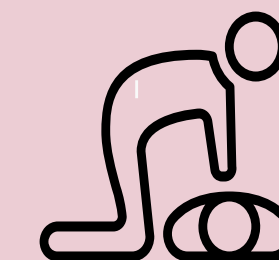
- Identify pathology
- Dictate resus priorities
- Guide termination

How do we resuscitate the traumatic cardiac arrest patient?



THORACOTOMY

Guidelines exist to help decision making (considering potential for survival)

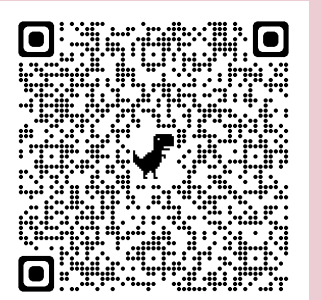


CHEST COMPRESSIONS

De-prioritize in favour of rapidly focusing on interventions to treat reversible causes

AN APPROACH TO TRAUMATIC CARDIAC ARREST:

Click the QR code attached for an approach to traumatic cardiac arrest in your ED



Take Home Message: Understand and treat underlying physiology. Consider de-prioritizing chest compressions.

Sowers & Hung. CJEM. Sep 2023

<https://doi.org/10.1007/s43678-023-00541-y>

Infographic by: S Wilson, MD



CJEM JCMU