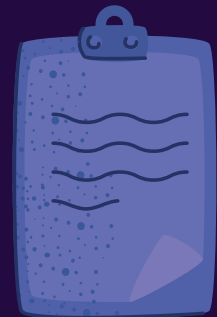




CHEMICAL RESTRAINTS



- Used to **calm, NOT sedate**.
- No set rules on which medications to use, but some guidelines suggest:
 - For severely violent patients who require immediate sedation:
 - Rapidly acting first generation antipsychotic alone.
 - Benzodiazepine alone.
 - A combination of a first generation antipsychotic and benzodiazepine.
 - For patients with agitation from drug intoxication or withdrawal:
 - Benzodiazepine alone.
 - For patients with undifferentiated agitation:
 - Preferred: benzodiazepine.
 - First generation antipsychotic.
 - For agitated patients with a known psychotic or psychiatric disorder:
 - Preferred: First Generation antipsychotic.
 - Second generation antipsychotic.



COMMON MEDICATIONS AND THEIR DOSAGES

	Initial Dose (mg)	Tmax	Can Repeat Every	Max dose per 24 hours (mg)
PO				
Risperidone	2	1 hour	2 hours	6
Olanzapine	5-10	6 hours	2 hours	20
Haloperidol	5	30-60 mins	15 mins	20
Lorazepam	2	20-30 mins	2 hours	12
IM				
Olanzapine	10	15-45 mins	20 mins	30
Aripiprazole	9.75	1 hour	2 hours	30
Haloperidol	5	30-60 mins	15 mins	20
Lorazepam	2-4	20-30 mins	30 mins	12
Midazolam	5-10	15-20 mins	5-10 min	20
IV				
Haloperidol	2-5	Immediate	4 hours	10

- **Following administration, always monitor patients for potential side effects to given medications**
 - **Benzos:** respiratory depression, abnormal somnolence.
 - **Antipsychotics:** Acute extrapyramidal effects e.g. acute dystonias (sudden, sustained contractions of the mouth, tongue, and eye muscles); QT interval elongation.